

# Summary of CEMARS certification

## Environmental Protection Authority

Year 1 of 3 year certificate period

*Environmental Protection Authority meets the requirements of CEMARS® certification having measured its greenhouse gas emissions in accordance with ISO 14064-1:2006 and committed to managing and reducing its emissions in respect of the operational activities of its organisation.*



**Environmental Protection Authority**  
Te Mana Rauhi Taiao

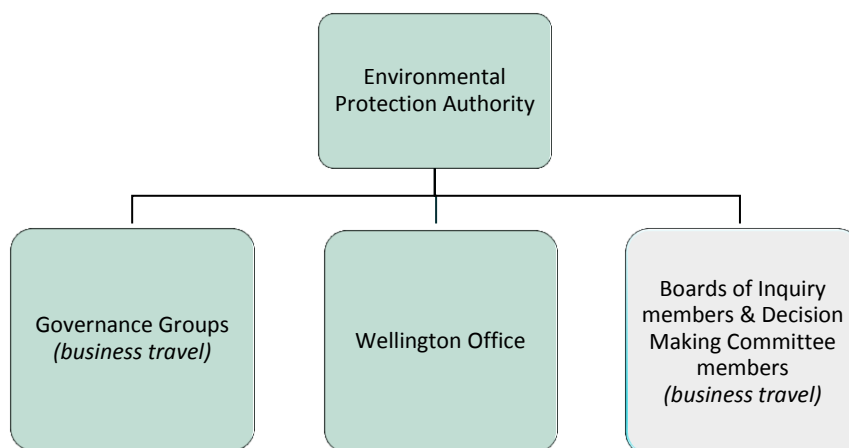
**Introduction<sup>1</sup>** – The Environmental Protection Authority (EPA) has committed to CEMARS certification to formally demonstrate its commitment to measuring and managing its carbon footprint, and having this process externally verified.

As the national regulator responsible for administering legislation which seeks to reduce New Zealand’s greenhouse gas emissions and phase out the use of ozone-depleting substances, the EPA feels strongly that it must commit to the importance of these national outcomes by minimising and accounting for its own carbon emissions. This will enable the EPA to send a clear message to its regulated community, and the New Zealand public, that it is a regulator of integrity.

By its very name, the EPA aims to protect the environment. The organisation works to achieve its vision of ‘an environment protected, enhancing our way of life and the economy’ by making decisions on complex issues based on evidence, science and data. The EPA’s commitment to the CEMARS programme is a further, and public, embodiment of this vision.

Formal certification provides an opportunity for the EPA to work together internally, and with its stakeholders, to give greater effect to existing initiatives and to inspire new ideas for improvement.

**Boundary** – Figure 1 below shows the organisational structure used for describing the organisation’s greenhouse gas (GHG) emissions inventory, and what business units were included in the inventory in the context of the entire organisational profile. All business units were included in the inventory, along with EPA-related business travel for the organisation’s governance groups. The inventory also includes EPA-related business travel for members of the organisation’s independent decision-making committees, and for members of external Boards of Inquiry that the EPA supports.



**Figure 1:** Organisational structure showing business units included and excluded.

<sup>1</sup> **Disclaimer:** This Disclosure Statement is a summary of the verified information considered for certification and the certification decision. It should not be taken to represent the full submission for certification. Whilst every effort has been made to ensure that the information in this Disclosure Statement is accurate and complete, Enviro-Mark Solutions Limited does not, to the maximum extent permitted by law, give any warranty or guarantee relating to the accuracy or reliability of the information.

# Summary of CEMARS certification

## Environmental Protection Authority

Year 1 of 3 year certificate period

**Consolidation approach** – The operational control consolidation approach has been used to account for operational emissions with reference to the methodology described in the GHG Protocol and ISO 14064-1:2006 standards.

**Base year** – 01/07/2017 to 30/06/2018

**Measurement period** – 01/07/2017 to 30/06/2018

**Emissions source inclusions** – The operational GHG emissions for the organisation by emissions source are shown in Figure 2 below.

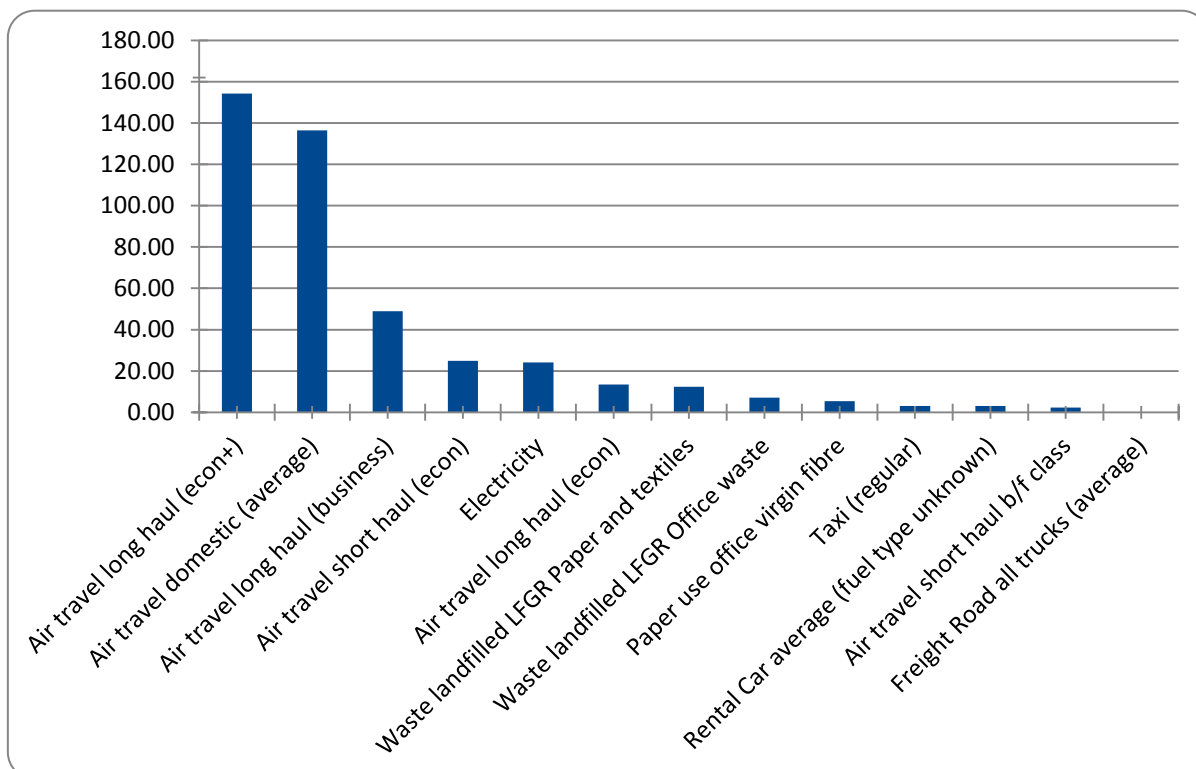


Figure 2: GHG emissions by emissions source (tCO<sub>2</sub>e).

Emissions as tonnes of carbon dioxide equivalents (tCO<sub>2</sub>e) for this period were:

Emissions summary by scopes		Units
<b>Scope 1 total</b>	<b>2.96</b>	<b>tCO<sub>2</sub>e</b>
<b>Scope 2 total</b>	<b>24.08</b>	<b>tCO<sub>2</sub>e</b>
<b>Scope 3 total</b>	<b>408.53</b>	<b>tCO<sub>2</sub>e</b>
Mandatory scope 3	380.43	tCO <sub>2</sub> e
Additional scope 3	28.10	tCO <sub>2</sub> e
One-time scope 3	0.00	tCO <sub>2</sub> e
<b>Total inventory:</b>	<b>435.57</b>	<b>tCO<sub>2</sub>e</b>

**Emissions source exclusions** – The following emissions sources were excluded from the inventory for this measurement period:

GHG emissions source	Reason
Freight	Courier and mail items less than 2kg were excluded and are considered as <i>de minimis</i>



# Summary of CEMARS certification

## Environmental Protection Authority

Year 1 of 3 year certificate period

GHG emissions source	Reason
GHG Stock Liability	The Environmental Protection Authority has domestic size fridges and hot and cold water dispensers in the staff areas on each floor. However, HFC Stock liabilities for systems under 3 kg have been excluded as per CEMARS programme rules.

**Emissions reduction commitments** – A GHG emissions management plan and reduction targets have been developed. These include:

- Reducing emissions per FTE from purchased electricity by 8%, by 1 July 2021 – through staff awareness campaigns and using the EECA online tool to identify energy savings
- Reducing waste to landfill and paper usage emissions per FTE by 15%, by 1 July 2021 – through staff education and awareness campaigns
- Reducing staff business travel emissions per FTE by 8%, by 1 July 2021 – through the review of travel policies and technology

**Verified by** – Enviro-Mark Solutions Limited

**Data quality score** – High

**Threshold of materiality** – Excluded emissions do not exceed 5% of the total footprint within the organisation boundary stated.

**Level of assurance** – Reasonable

**Certification status** – CEMARS certified organisation

**Certificate number** – 2018122J, Year 1 of 3 year certificate period

**Valid until** – 20 December 2021