

# EAST WEST LINK SUBMISSION 126126

Nanne de Haan - Representation



## Main issues with the current proposal

---

- Long List holds little variety
- Multi Criteria Analysis uses improper baseline for transport performance
- Neilson Street severs Onehunga village from Onehunga waterfront

Long List holds little variety

## OPTION 2

### ONEHUNGA/PENROSE AREA

EXISTING ROUTE UPGRADE WITH NEW SH1 RAMPS AT SEART

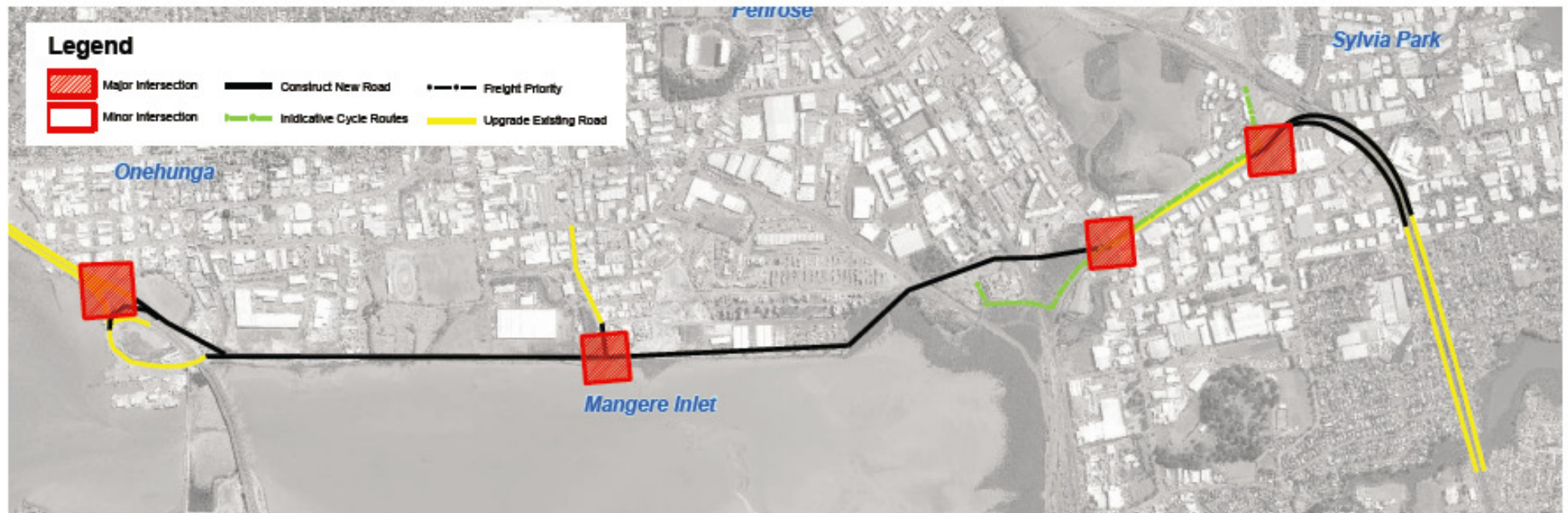


Long List holds little variety

---

## OPTION 16 ONEHUNGA/PENROSE AREA

NEW FULL FORESHORE MOTORWAY CONNECTION SH20 TO SH1





## Long List holds little variety

---



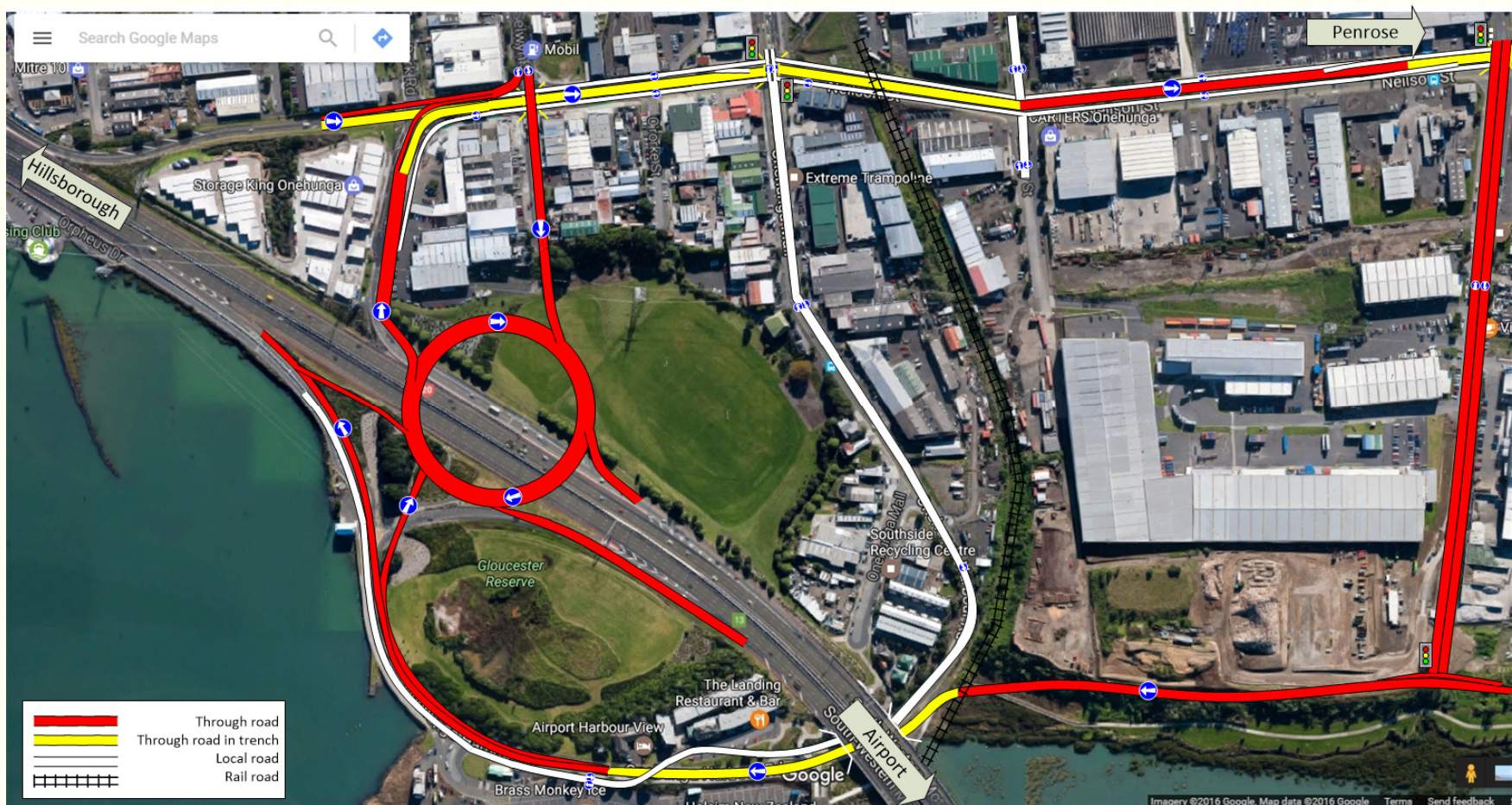
## Long List holds little variety

---





# Long List holds little variety



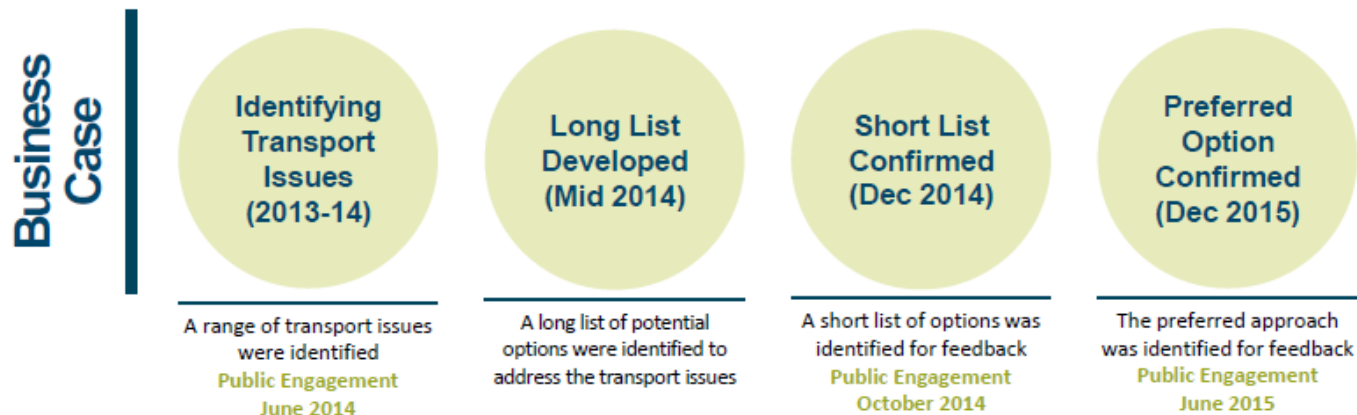
# Long List holds little variety

---

Request to Board of Inquiry:

Have the process restarted at the development of the Long List

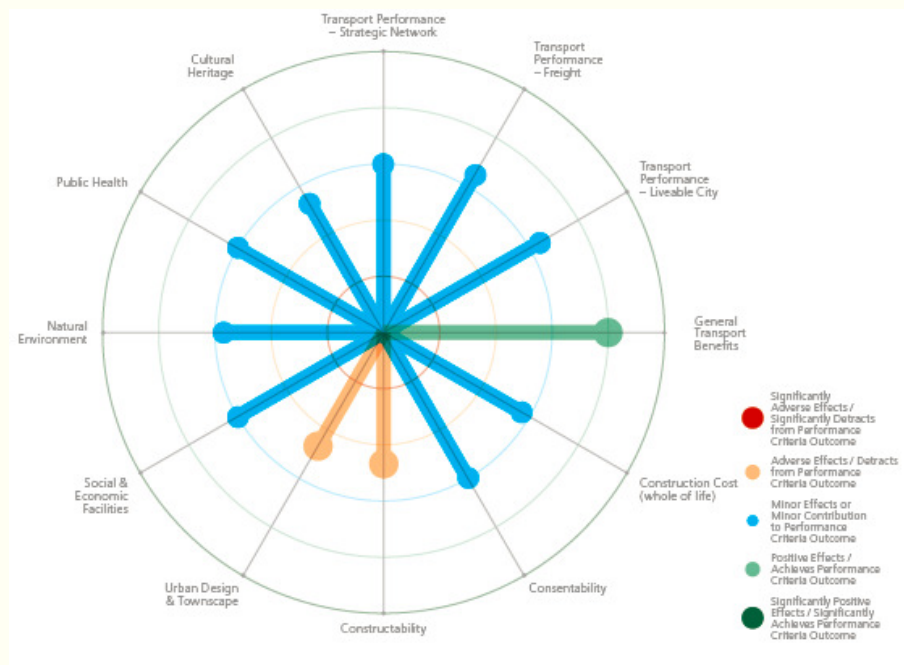
## Process Followed



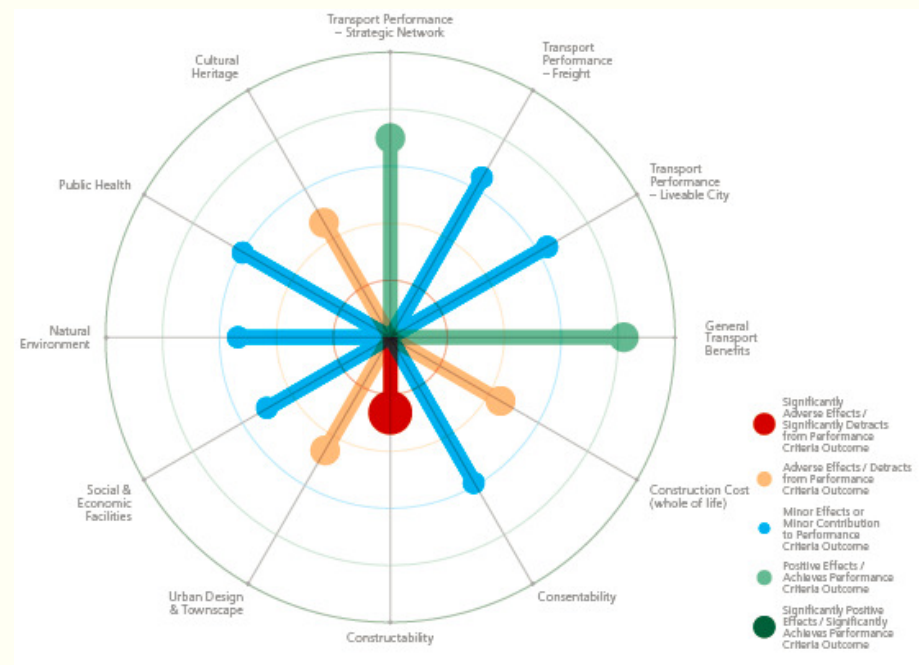


# MCA uses improper baseline for transport performance

Longlist Option 1: Existing route upgrade with Freight Lanes



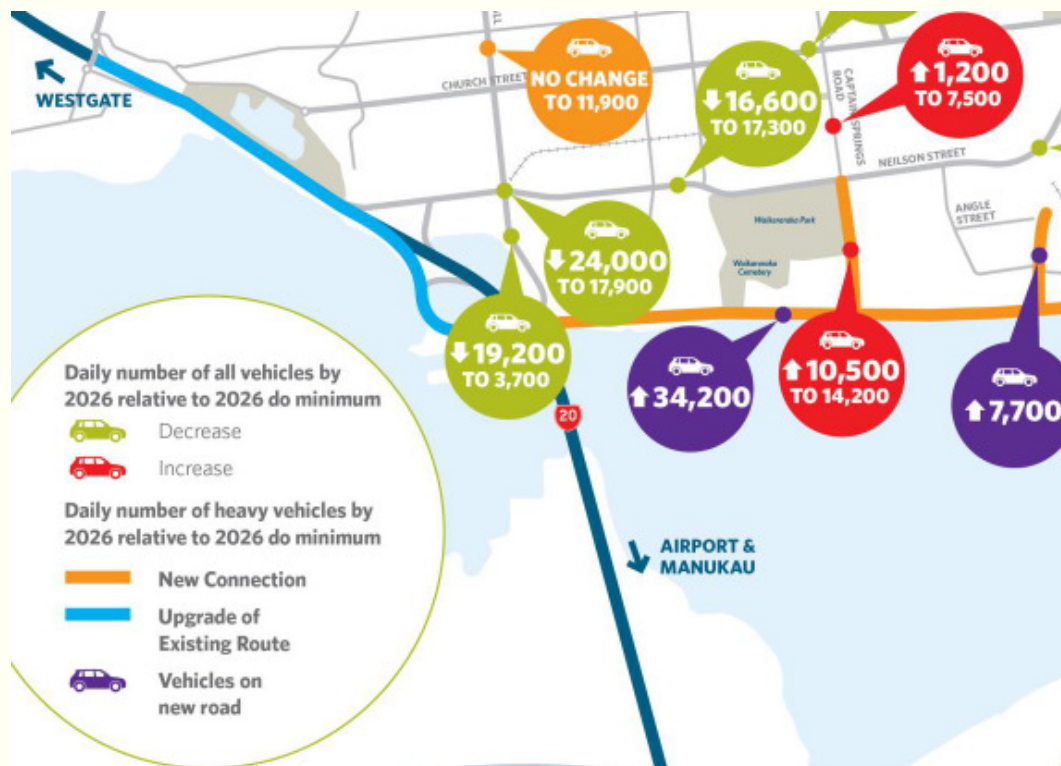
Longlist Option 2: Existing route upgrade with New SH1 ramps at SEART



Transport benefits measured against what?

## MCA uses improper baseline for transport performance

---



Request to Board of Inquiry:

Have the MCA redone with a different Baseline for Transport Performance.

Baseline could be: How congestion-free will this design be by 2026?

## Neilson Street severs Onehunga village from Onehunga waterfront

Neilson street will remain a start/stop fest for freight vehicles



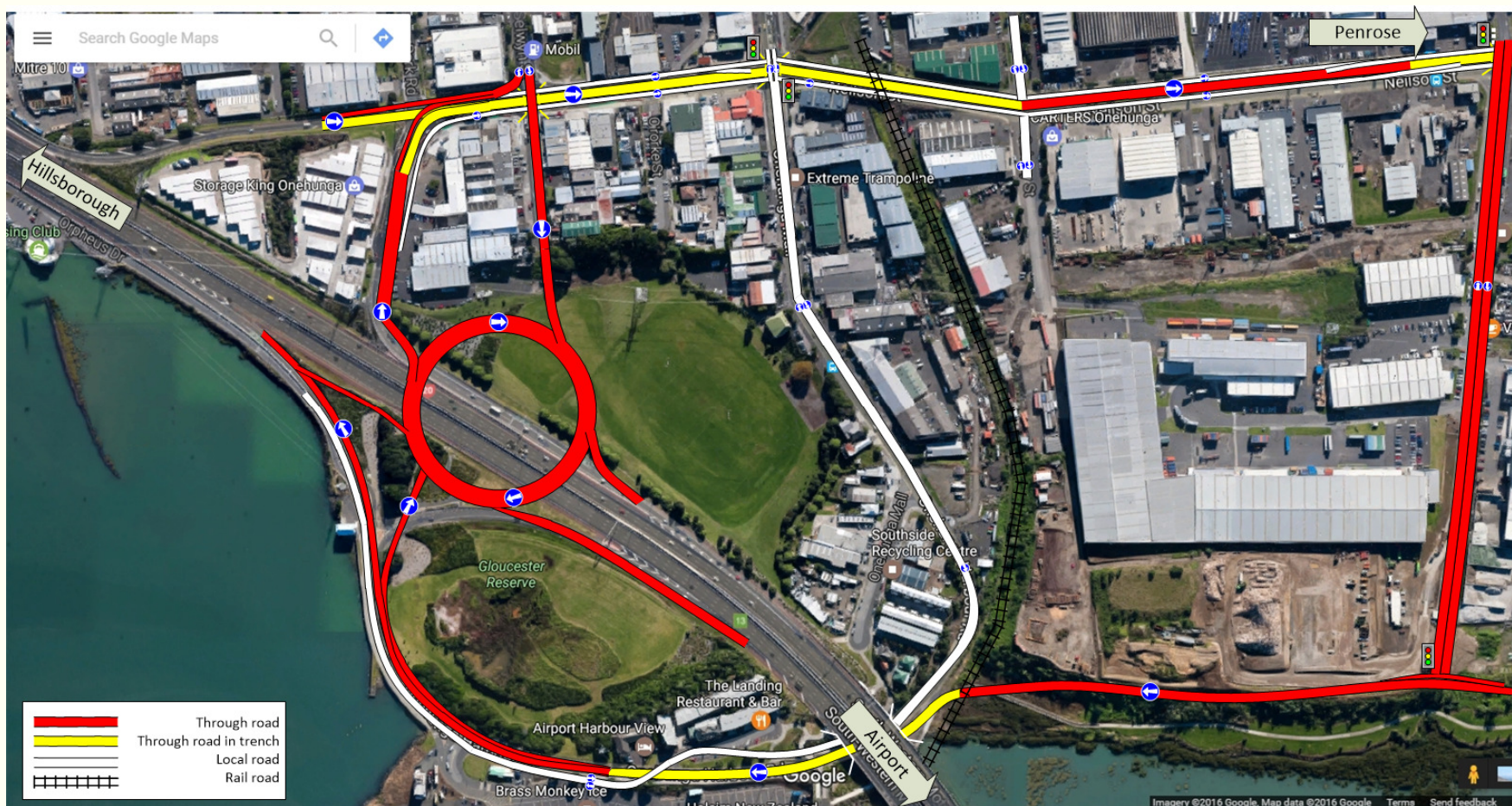


# Neilson Street severs Onehunga village from Onehunga waterfront

Request to Board of Inquiry:

Consider a land bridge not only at the Landing but also at Onehunga Mall /Neilson Street

# Alternative design (only when time left)





## Alternative design (only when time left)

