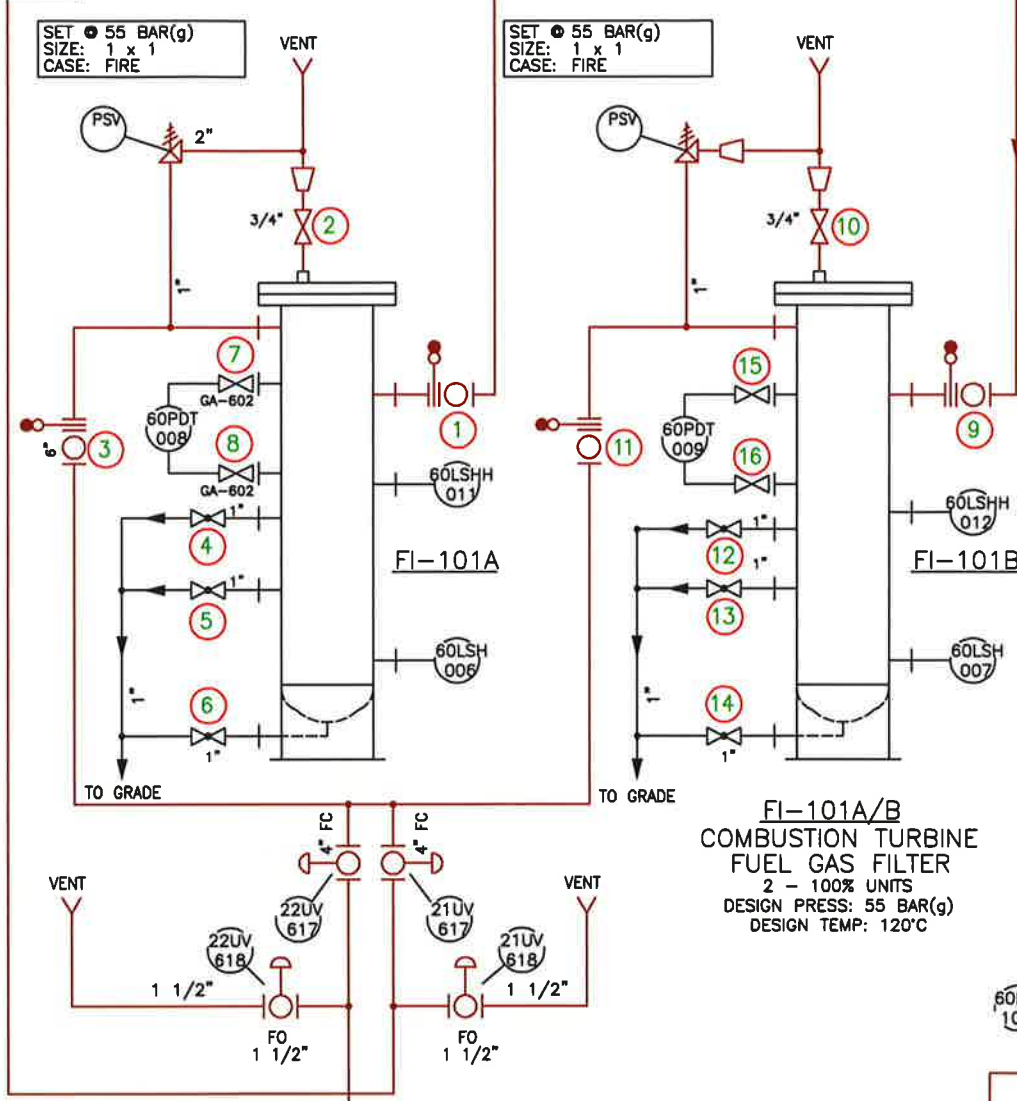




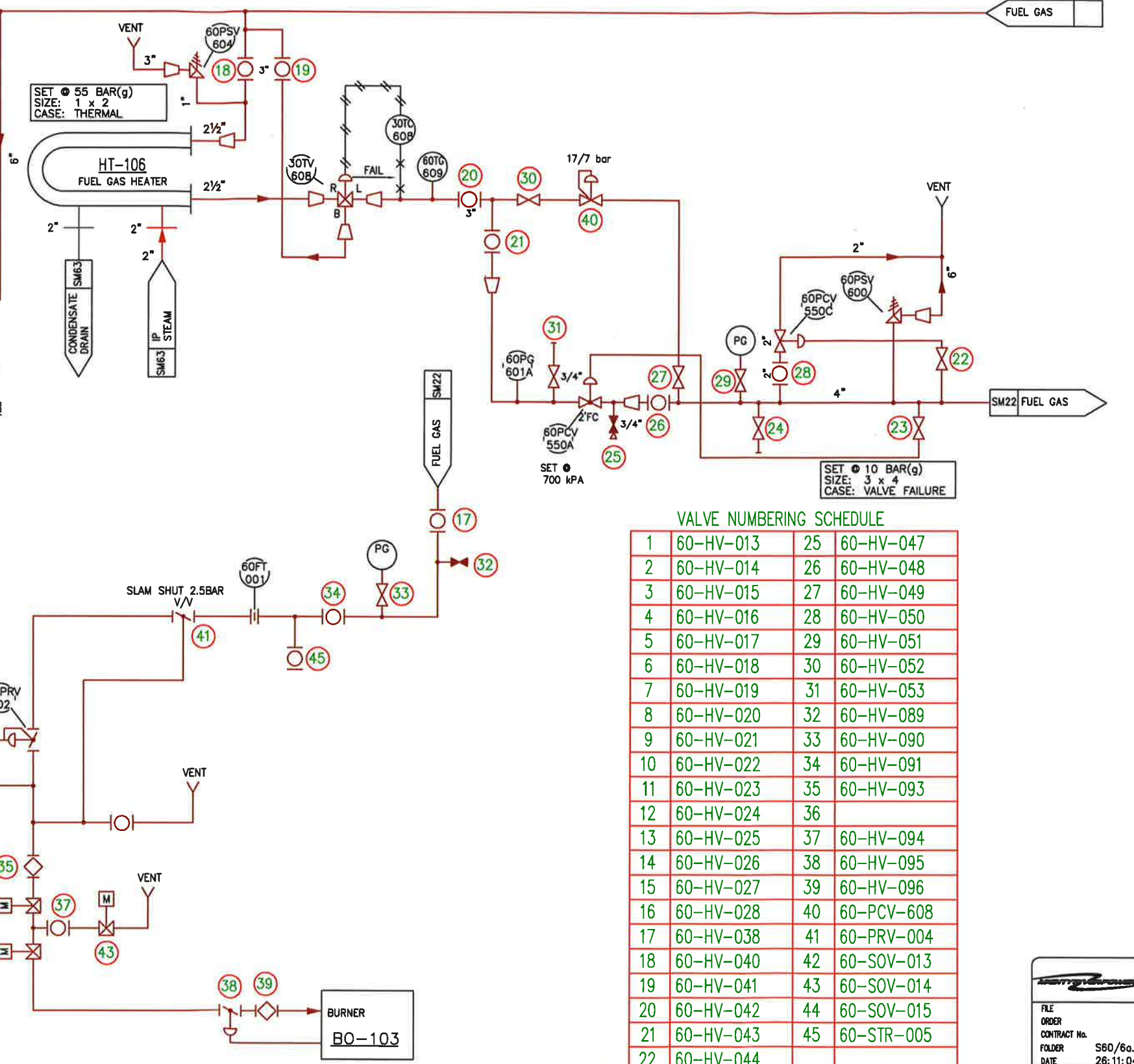
DRAWING NUMBER
SM21

© COPYRIGHT 2004 HYDRO AND GENERAL ENGINEERING LTD.
ALL RIGHTS RESERVED. UNAUTHORISED USE PROHIBITED.

GE-101



GE-102



VALVE NUMBERING SCHEDULE			
1	60-HV-013	25	60-HV-047
2	60-HV-014	26	60-HV-048
3	60-HV-015	27	60-HV-049
4	60-HV-016	28	60-HV-050
5	60-HV-017	29	60-HV-051
6	60-HV-018	30	60-HV-052
7	60-HV-019	31	60-HV-053
8	60-HV-020	32	60-HV-089
9	60-HV-021	33	60-HV-090
10	60-HV-022	34	60-HV-091
11	60-HV-023	35	60-HV-093
12	60-HV-024	36	
13	60-HV-025	37	60-HV-094
14	60-HV-026	38	60-HV-095
15	60-HV-027	39	60-HV-096
16	60-HV-028	40	60-PCV-608
17	60-HV-038	41	60-PRV-004
18	60-HV-040	42	60-SOV-013
19	60-HV-041	43	60-SOV-014
20	60-HV-042	44	60-SOV-015
21	60-HV-043	45	60-STR-005
22	60-HV-044		
23	60-HV-045		
24	60-HV-046		

REV	DESCRIPTION	CONSULTANT				Client	
		DSN	DRN	CHK	DATE	APP	DATE
A	REVISED TO CLIENT COMMENTS	GM	SGT	GM	5/04		
B	REF DWG NUMBERS CHANGED	SGT	SGT	GM	7/04		
C	AS BUILT - AUXILIARY BOILER BO-103 ADDED	GM	SGT	SGT	3/05	GM	3/05
D	MINOR CHANGE	GM	SGT	GM	3/06	GM	3/06
E	AMENDED TO MARKED UP PRINT FROM GRAHAM MARTIN. MINOR CHANGES.	G.M.	EVR	G.M.	5/10	G.M.	5/10
F	VALVE NUMBERING SCHEDULE ADDED.	G.M.	EVR	G.M.	9/10	G.M.	9/10

Hydro and General Engineering Ltd
Power Industry Consultants

20 McDowall Place, HAMILTON
PHONE (07) 855 7002, FAX (07) 855 7010

DESIGNED	G. MARTIN	3/04
DRAWN	SG. TUNNICLIFFE	3/04
CHECKED	G. MARTIN	3/04
APPROVED	G. MARTIN	3/04

ASBESTOS REMEDIATION

Folder
S60/6a.1

DRAWING NUMBER
SM21

REVISION
F

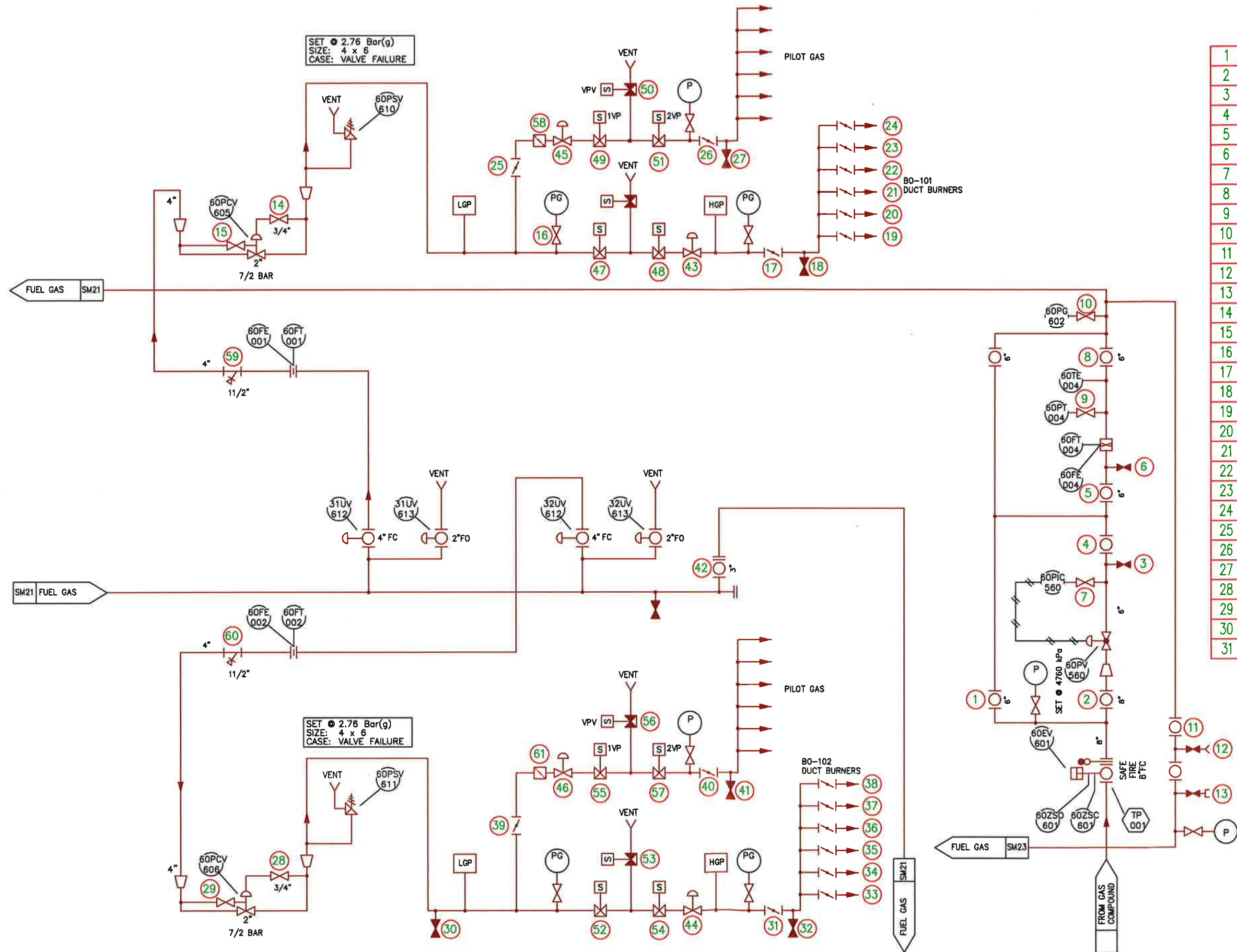
SOUTHDOWN POWER STATION
FUEL GAS SYSTEM
SHEET 1

FILE
ORDER
CONTRACT No.
FOLDER S60/6a.1
DATE 26/11/04

☒ Accepted as complying
☐ Accepted subject to statutory approval
☐ Provisional accepted as noted
Design/Manufacturer may proceed
☐ Not accepted
See accompanying letter

G. MARTIN
DATE 26/11/04

ISSUE
B

DRAWING NUMBER
SM22COPYRIGHT 2004 HYDRO AND GENERAL ENGINEERING LTD.
ALL RIGHTS RESERVED. UNAUTHORISED USE PROHIBITED.

VALVE NUMBERING SCHEDULE

1	60-HV-002	32	60-HV-078
2	60-HV-004	33	60-HV-079
3	60-HV-005	34	60-HV-080
4	60-HV-006	35	60-HV-081
5	60-HV-007	36	60-HV-082
6	60-HV-008	37	60-HV-083
7	60-HV-009	38	60-HV-084
8	60-HV-010	39	60-HV-085
9	60-HV-011	40	60-HV-086
10	60-HV-012	41	60-HV-087
11	60-HV-029	42	60-HV-088
12	60-HV-031	43	60-FV-001
13	60-HV-032	44	60-FV-002
14	60-HV-057	45	60-PRV-002
15	60-HV-059	46	60-PRV-003
16	60-HV-060	47	60-SOV-001
17	60-HV-061	48	60-SOV-003
18	60-HV-062	49	60-SOV-004
19	60-HV-063	50	60-SOV-005
20	60-HV-064	51	60-SOV-006
21	60-HV-065	52	60-SOV-007
22	60-HV-066	53	60-SOV-008
23	60-HV-067	54	60-SOV-009
24	60-HV-068	55	60-SOV-010
25	60-HV-069	56	60-SOV-011
26	60-HV-070	57	60-SOV-012
27	60-HV-072	58	60-STR-002
28	60-HV-074	59	60-STR-001
29	60-HV-075	60	60-STR-003
30	60-HV-076	61	60-STR-004
31	60-HV-077		

REV	DESCRIPTION
A	REVISED TO CLIENT COMMENTS
B	AS BUILT - AUXILIARY BOILER 80-103 SUPPLY ADDED
C	FUEL GAS SUPPLY TO GE-105 ADDED
D	AMENDED TO MARKED UP PRINT FROM GRAHAM MARTIN. GAUGES & VALVES ADDED.
E	VALVE NUMBERING SCHEDULE ADDED.

CONSULTANT	Client
DSN	DRN
GM	SGT
GM	SGT
GM	EVR
G.M.	EVR
G.M.	EVR

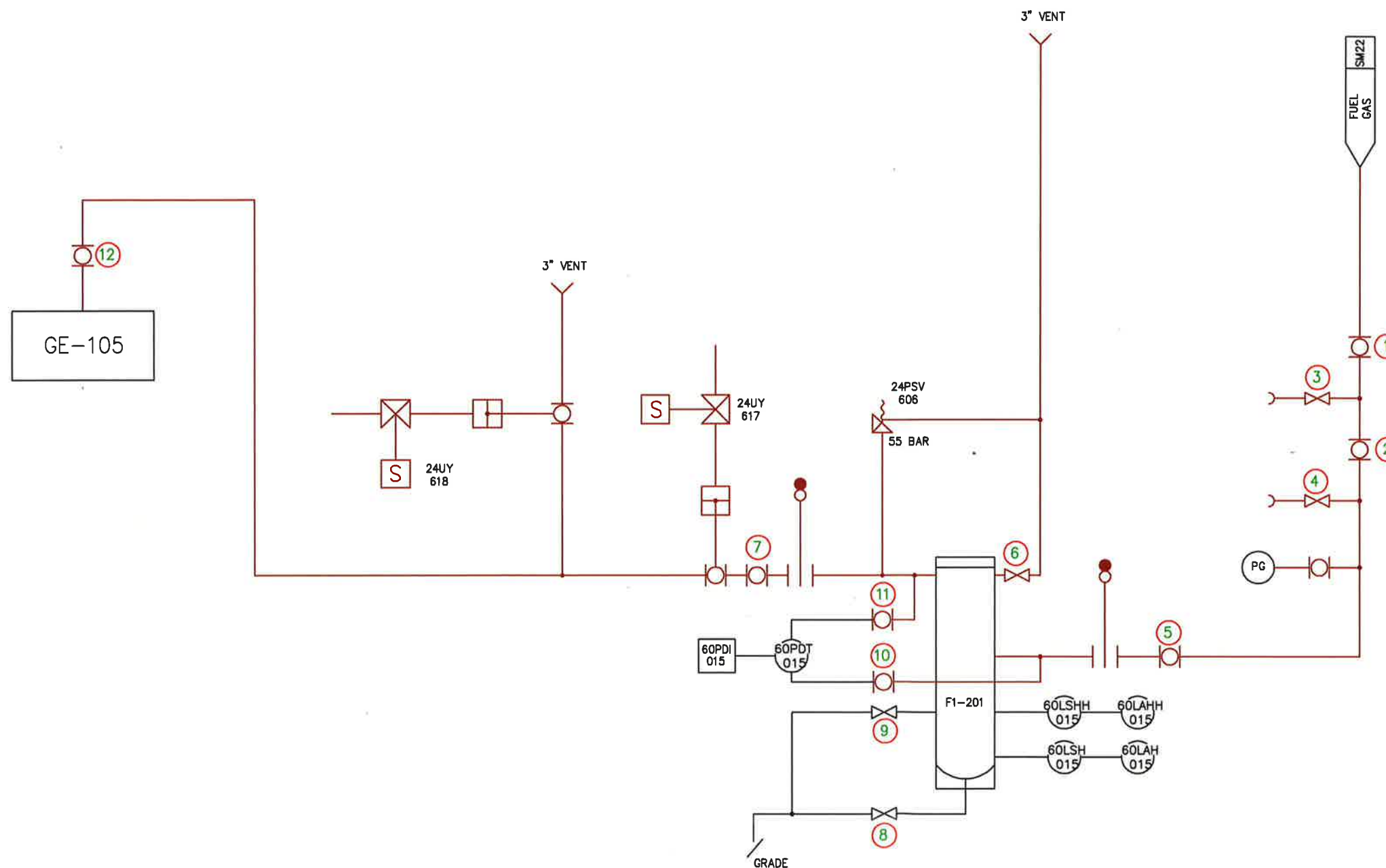
Hydro and General Engineering Ltd
Power Industry Consultants
20 McDowall Place, HAMILTON
PHONE (07) 855 7002, FAX (07) 855 7010

DESIGNED	G. MARTIN	3/04
DRAWN	SG. TUNNICLIFFE	3/04
CHECKED	G. MARTIN	3/04
APPROVED	G. MARTIN	3/04

Folder	S60/6a.1
Drawing Number	SM22
Revision	E
Southdown Power Station	
Fuel Gas System	
Sheet 2	

DRAWING NUMBER
SM23

© COPYRIGHT 2004 HYDRO AND GENERAL ENGINEERING LTD.
ALL RIGHTS RESERVED. UNAUTHORISED USE PROHIBITED.



VALVE NUMBERING SCHEDULE

1	60-HV-029
2	60-HV-030
3	60-HV-031
4	60-HV-032
5	60-HV-033
6	60-HV-034
7	60-HV-035
8	60-HV-036
9	60-HV-037
10	60-HV-038
11	60-HV-039
12	60-HV-054

REV	DESCRIPTION
A	AMENDED TO MARKED UP PRINT FROM GRAHAM MARTIN. PRESSURE GAUGE & BALL VALVES ADDED TO INCOMING SUPPLY.
B	VALVE NUMBERING SCHEDULE ADDED.

CONSULTANT				Client	
DSN	DRN	CHK	DATE	APP	DATE
G.M.	EVR	G.M.	6/10	G.M.	6/10
G.M.	EVR	G.M.	9/10	G.M.	9/10

Hydro and General Engineering Ltd
Power Industry Consultants

20 McDowall Place, HAMILTON
PHONE (07) 855 7002, FAX (07) 855 7010

DESIGNED	G. MARTIN	9/07
DRAWN	N. KURTH	11/07
CHECKED	G. MARTIN	11/07
APPROVED	G. MARTIN	11/07
SCALE		

SOUTHDOWN POWER STATION
FUEL GAS SUPPLY

Folder S60/6a.1	
DRAWING NUMBER SM23	REVISION B