

PUBLIC NOTICE

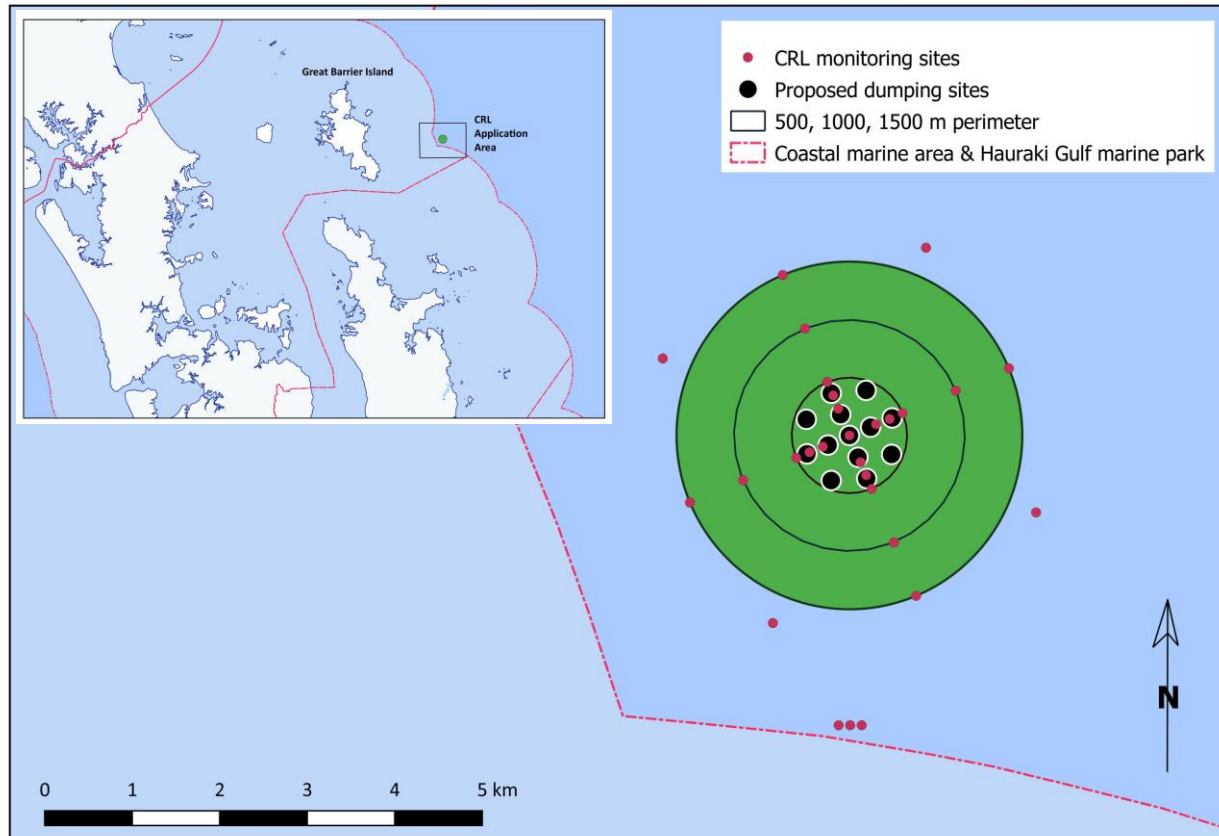
Coastal Resources Limited marine dumping consent application

Application for a marine dumping consent to dump dredged material at a deep-sea site east of Great Barrier Island (EEZ100015)

On 5 June 2018 Coastal Resources Limited (CRL) lodged an application with the Environmental Protection Authority (EPA) for a marine dumping consent. In accordance with section 46 of the Exclusive Economic Zone and Continental Shelf (Environmental Effects) Act 2012 (the EEZ Act), the EPA gives notice of this application.

Summary of the application

CRL is applying for a 35-year consent to annually dump up to 250,000m³ of dredged material from source sites within Auckland and Waikato, at an existing dump site 25km east of Great Barrier Island, centred on 36°12.3403"S and 175°48.002"E as shown on the map below. The consent, if approved, will replace CRL's current consent, which expires in 2032 and under which up to 50,000m³ of dredged material, from existing or proposed marinas in Auckland and Waikato, can be dumped annually.



A full description of the proposal is included in the Impact Assessment and appendices that accompanies the application. These are available at the locations specified below.

Where to view the application

CRL's application, and further information on the process, can be viewed on the EPA's website at: www.epa.govt.nz under the Public Consultations > open-for-submission area.

The application can also be viewed in hard copy during normal office hours at:

- EPA Office, Level 10, 215 Lambton Quay, Wellington
- Central City Library, 44-46 Lorne Street, Auckland
- Great Barrier Library, 75 Hector Sanderson Road, Claris, Great Barrier Island

How to make a submission

Anyone can make a submission on the application provided it is in the prescribed submission form. Submission forms are available online or can be downloaded from www.epa.govt.nz > public-consultations > open-for-submission. Submission forms can also be requested by contacting the EPA on 0800 080 065 or via email at crl.application@epa.govt.nz.

You must also send a copy of your submission to Coastal Resources Limited:

- By email at mary-ellen@kaipara.co.nz, or
- By post to Coastal Resources Limited, PO Box 8, Beachlands, Auckland 2147, ATTN: Mary-Ellen Stichbury, or
- Delivered in person to Coastal Resources Limited, Level One, Ranger House, 190 Jack Lachlan Drive, Beachlands, Auckland, ATTN: Mary-Ellen Stichbury.

Submissions must be received by the EPA no later than **5.00pm on Monday 10 September 2018**.

Richard Johnson

Manager EEZ Applications

Under delegation from the Environmental Protection Authority