

Port of Tauranga Methyl Bromide Fumigation Monitoring – Interim Report 9

Amended Report: Table 3 location 1 & 2 description incorrect (page 4) Table 4 Location number incorrect (page 6).

Fumigation and venting details can be found in Table 1.

Table 1: Monitoring details

Date	07/05/2020
Fumigation Type	Log stacks
Fumigation amount (kg) – during 1hr sampling	533
Fumigation Location	Fumopad
Venting Time	13:43-15:30
*Sample time (1hour)	13:43-14:43
*Predominant wind direction over 1 hour sample	Westerly
*Average wind speed over 1 hour period	3-5m/s
Sample date (24 hour)	07/05/2020 – 08/05/2020
Sample time/s (24 hour)	13:39 – 13:39 (location 1)
Other venting in the 24 hour period	4 rows in Fumopad

*1 hour Sample times differ from the total venting time i.e. venting went on for longer than the 1 hour sample period

*From observations at the time of sampling, measured met data is provided in a separate document.


Table 2: Fumigation and Venting Details 07/05/2020

Row (North to South)	Log Volume (JAS)	Covered Volume (m ³)	Methyl Bromide used (kg)	Pre-vent Concentration (ppm)	Methyl Bromide Released (kg)
FP6	1392	-*	247	-*	-*
FP5	1200	-*	286	-*	-*

*Data not provided by Genera

Map 1: Fumigation and Sampling Locations 07/05/2020

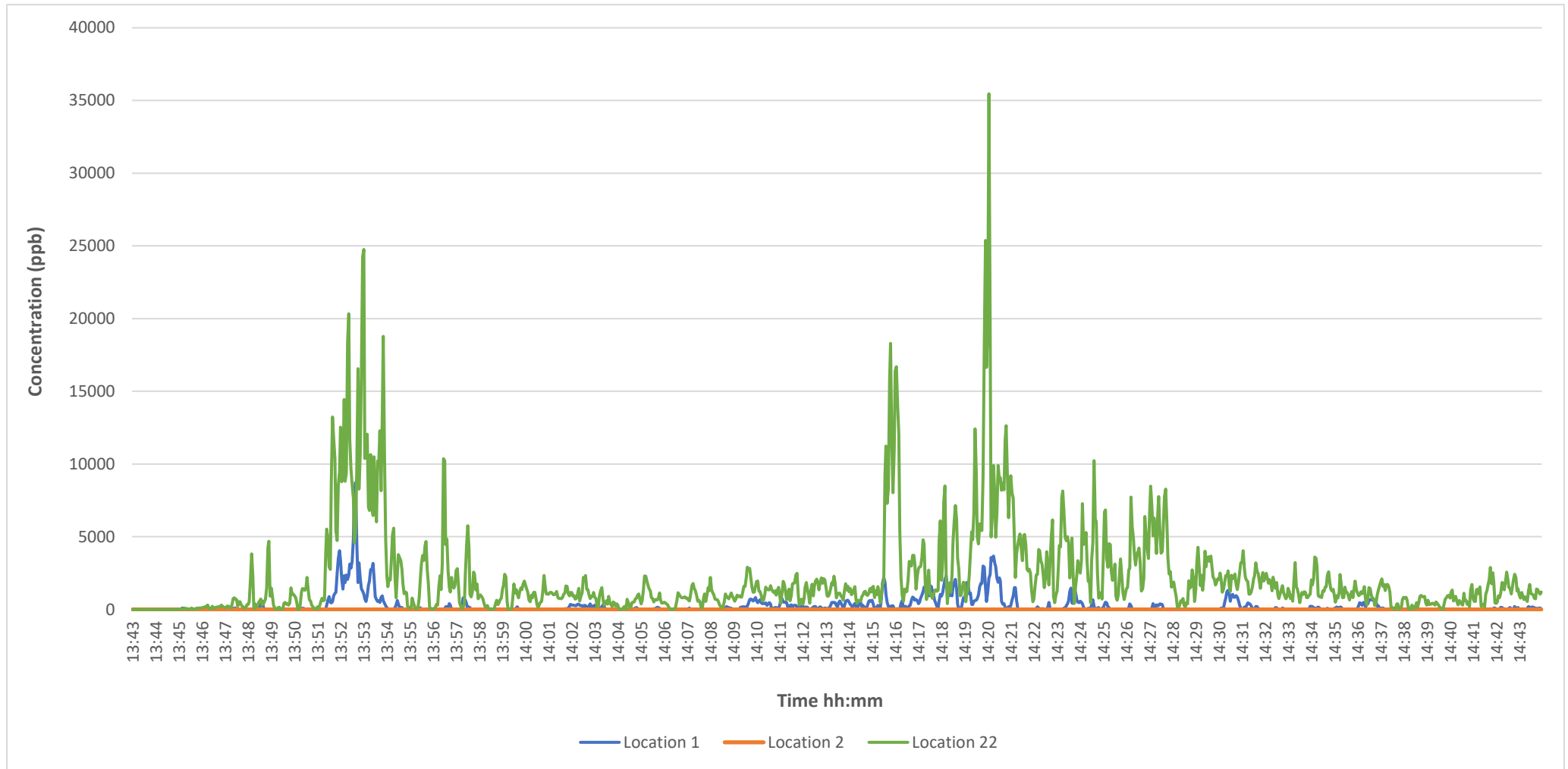


 Log stack venting (please note locations are only approximate)

 Sample locations

1-hour canister sampling and TVOC monitoring was undertaken at locations 1, 2 and 22 from 13:43 – 14:43. 24-hour canister sampling was also undertaken at location 1. The average and peak TVOC measurements for the sampling period are shown below in Table 3 and Graphs 1-4. Canister sampling results can be found in Table 4.

Graph 1: Real-time Total Volatile Organic Compound (TVOC) measurements at all 1-hour sampling locations on the 07/05/2020



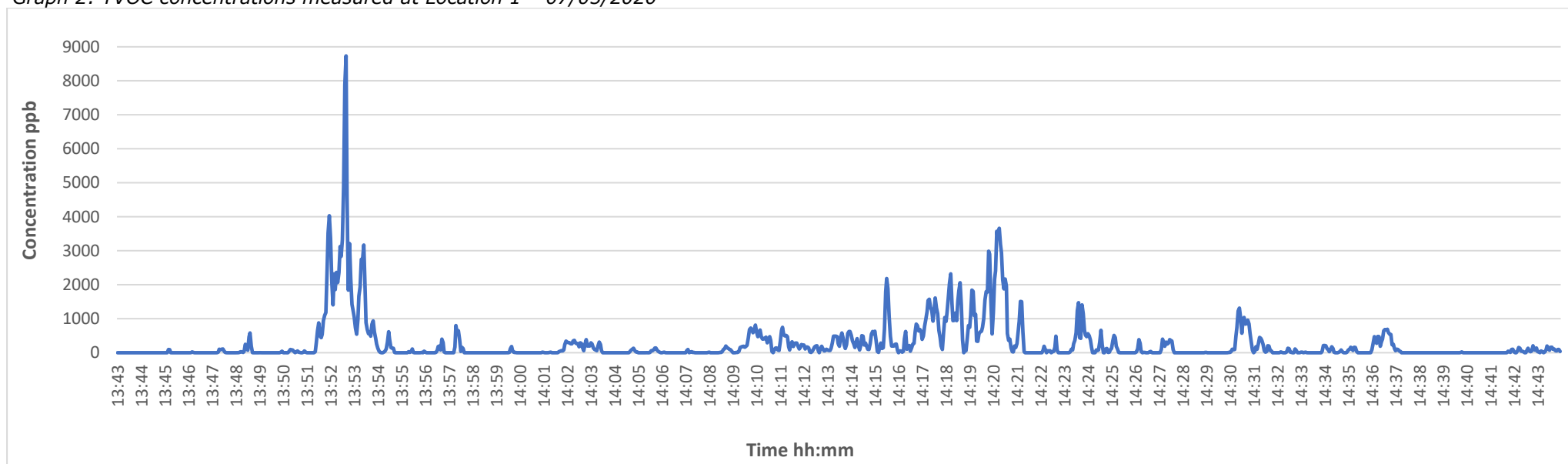
Notes: 13:43 start of canister sampling. Please note: concentrations have not been corrected for methyl bromide and measurements will account for all VOC's including methyl bromide

Table 3: Average and peak real-time TVOC measurements on the 07/05/2020

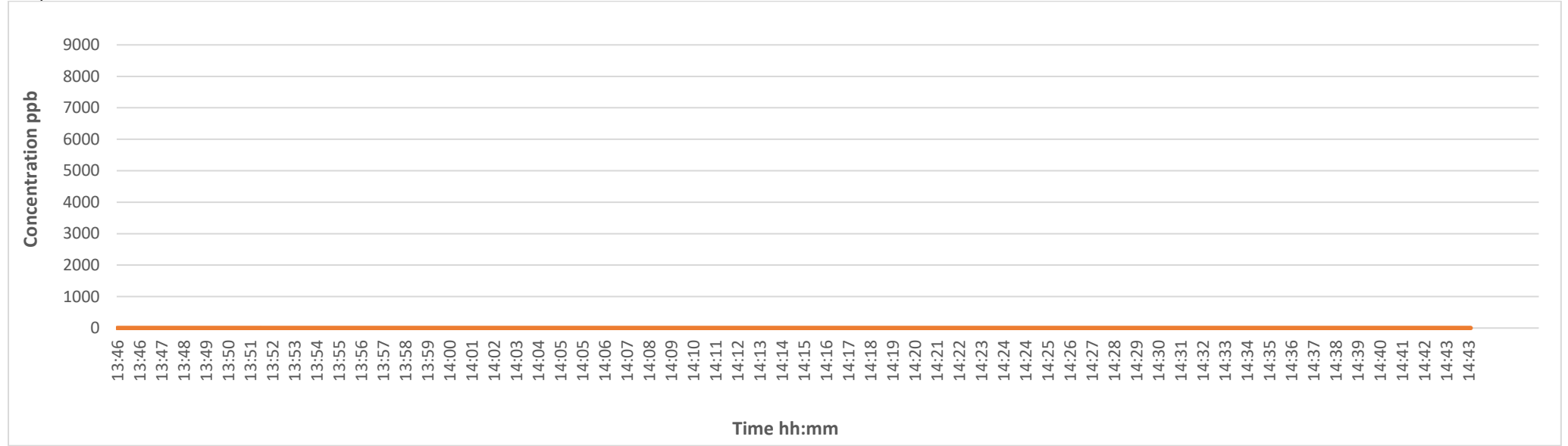
Location (as shown on Map 1)		Average TVOC measured over sampling period (ppb)*	Peak TVOC measured over sampling period (ppb)*
1	KiwiRail Boundary	270	8733
2	Next to coal shoot KiwiRail Boundary	<1	1
22	Port – opposite blue road	2239	35462

*Concentrations have not been corrected for methyl bromide

Graph 2: TVOC concentrations measured at Location 1 – 07/05/2020



Graph 3: TVOC concentrations measured at Location 2- 07/05/2020



Graph 4: TVOC concentrations measured at Location 22- 07/05/2020

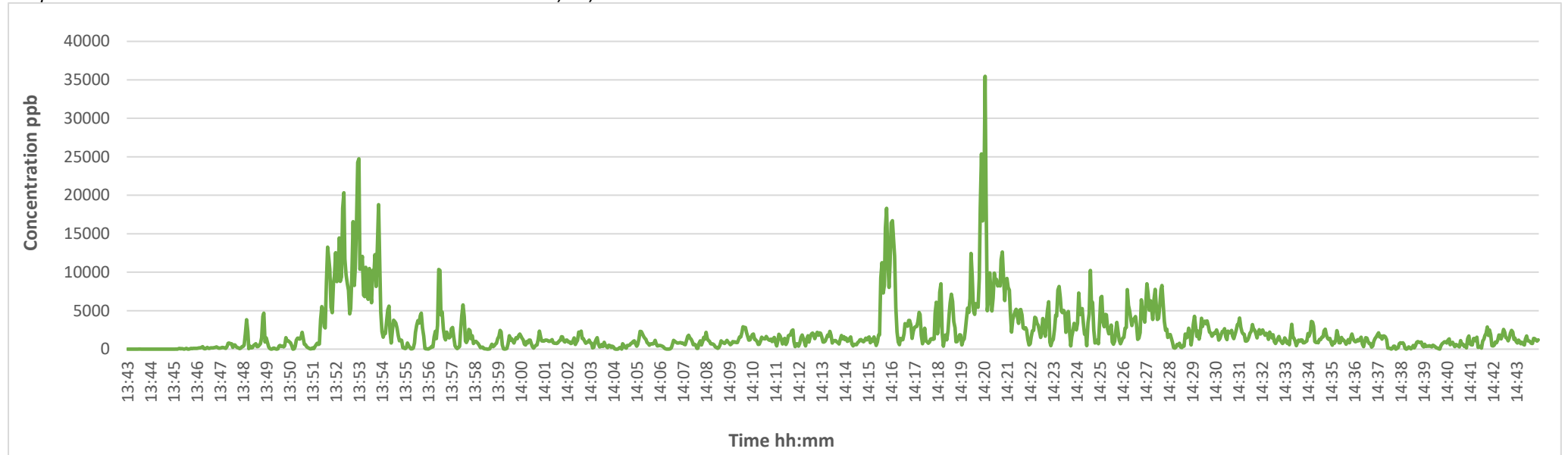


Table 4: 1-hour and 24-hour Canister Sampling Results 07/05/2020

Location (as shown on map above)		Sample Number	Sample length	Sample Time	Canister size	Methyl bromide Concentration (ppbv)
1	Kiwi Rail Boundary	19827-0705-1	1 hour	13:43 – 14:43	1.4L	680±110
		19827-0705-1A	24 hour	13:39 – 13:39	6L	103±16
2	Next to coal shoot KiwiRail Boundary	19827-0705-1A	1 hour	13:43 – 14:43	1.4L	<5±0.7
22	Port – opposite blue road	19827-0705-22	1 hour	13:43 – 14:43	1.4L	3420±520